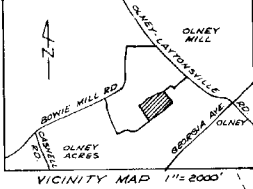


CURVE DATA						
N#	RADIUS	Δ	ARC	TAN	CHORD	BEARING
1	30.00	70°31'44"	36.93	21.21	34.64	N84°46'01"W
2	60.00	250°31'44"	362.35	84.85	97.98	N05°43'53"E
3	60.00	300°00'00"	314.16	34.64	60.00	N40°59'51"E
4	30.00	70°31'44"	36.93	21.21	34.64	N05°43'53"E
5	60.00	260°31'44"	262.35	84.85	97.98	S84°16'01"E

PLAY NO. 9767



**OWNERS DEDICATION**

We, OLNEY SQUARE DEVELOPMENT CORPORATION, a Maryland Corporation by Louis A. Zuckerman, President and Greta L. Zuckerman, Secretary and DOLAN CONSTRUCTION CORPORATION, a Maryland Corporation by David Katz, President and Olga Katz, Secretary, owners of the property shown and described hereon, hereby adopt this plan of subdivision, establish the minimum building restriction lines, dedicate the streets to public use, establish easements as shown for the construction, reconstruction, operation and maintenance of storm drains and sanitary sewers and establish slope easements 20 feet wide along all streets as required by Montgomery County Ordinance # 4-15. Slope easements granted hereon shall be terminated after all required public improvements including said easements have been lawfully completed and have been accepted for maintenance by Montgomery County, Maryland.

There are no suits of action, leases, liens or trusts on the property included in this plan of subdivision except a certain deed of trust and the parties in interest thereto have hereon indicated their assent to this plan.

June 30, 1970

OLNEY SQUARE DEVELOPMENT CORP.

Attest: *Greta L. Zuckerman*  
Greta L. Zuckerman, Secy. Louis A. Zuckerman, Pres.

DOLAN CONSTRUCTION CORP.

Attest: *Olga Katz*  
Olga Katz, Secy. By: *David Katz*  
David Katz, Pres.

We hereby assent to this plan of subdivision:

*Frank Paron* Witness  
*Julius Goldstein* Witness  
*Amey N.B. Goldstein* Witness  
*C. Haskell Small* Witness  
*Simon Hirshman* Witness  
*E. Spencer Fitzgerald*  
*Ruth B. Small*  
*Louis A. Zuckerman*

**SURVEYORS CERTIFICATE**

I hereby certify that the plan shown hereon is correct, that it is a subdivision of part of the land conveyed by Julius Goldstein et al to OLNEY SQUARE DEVELOPMENT CORPORATION and DOLAN CONSTRUCTION CORPORATION by deed dated June 25, 1968 and recorded in Liber 3769 at folio 414 among the Land Records of Montgomery County, Maryland. Iron pipes marked thus (O) and monuments marked thus (■) have been set where indicated. The total area of this plot is 483,837 square feet or 11.1074 acres of land of which 89,450 square feet or 2.0335 acres are dedicated to public use.

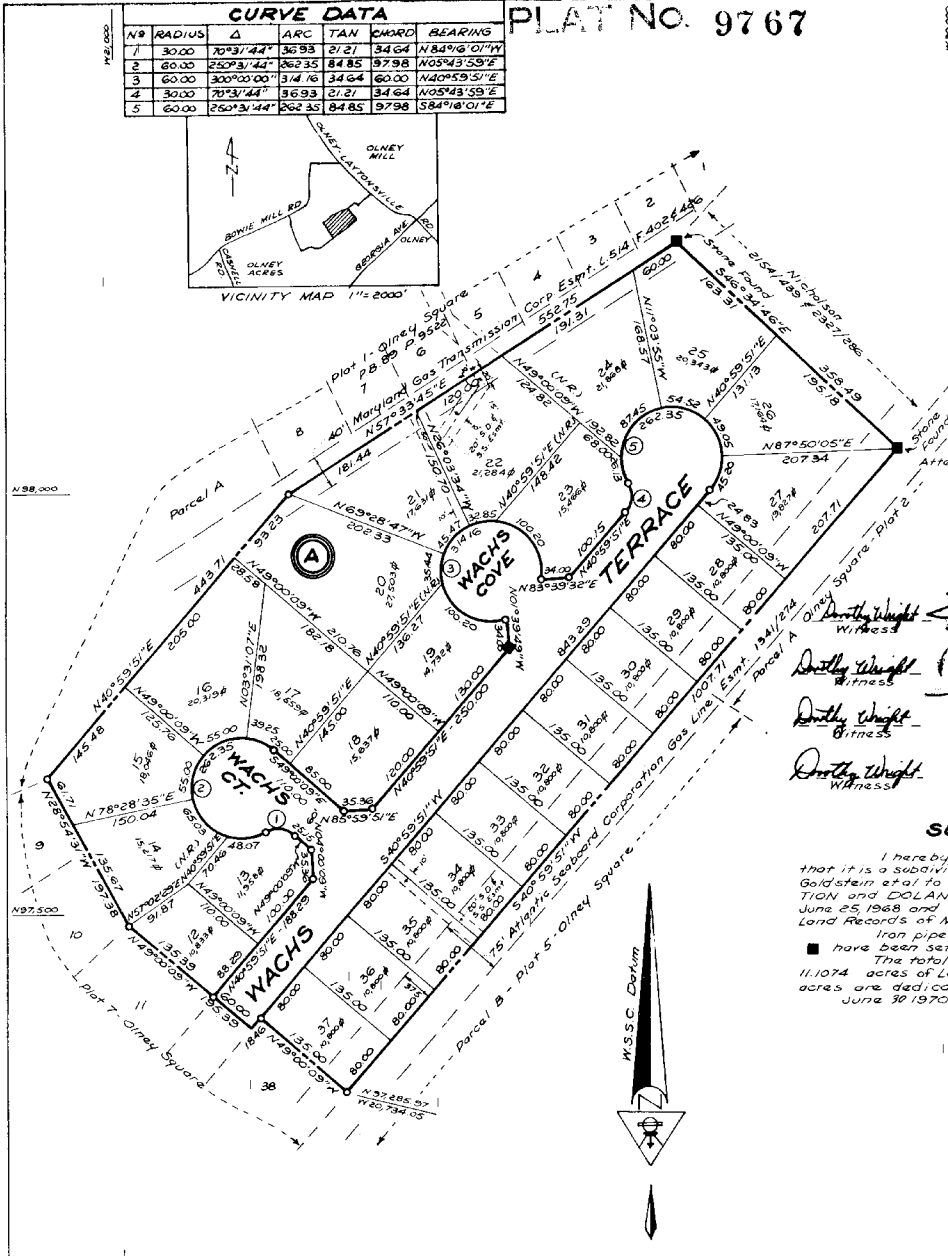
*Rodney L. Hanson*  
Rodney L. Hanson  
Reg. Land Surveyor, Md # 3084

**PLAT - 6  
PART OF BLOCK A  
OLNEY SQUARE**

8<sup>th</sup> ELECTION DISTRICT  
MONTGOMERY COUNTY, MARYLAND  
Scale 1"=100' Date June, 1970

HANSON & DEN OUTER

CIVIL ENGINEERS & LAND SURVEYORS  
LAND PLANNING CONSULTANTS  
172 ROLLING AVE. ROCKVILLE, MD 20858  
301-881-6770



This land lies within an approved RR cluster development, subdivision or resubdivision is not permitted and development of the land is permitted only in accordance with the land uses indicated on the approved development plan.

"For Public Sewer and Water Systems Only"

THE MARYLAND NATIONAL CAPITAL PARKS & PLANNING COMMISSION  
MONTGOMERY COUNTY PLANNING BOARD  
APPROVED July 23, 1970  
*Leonard Treubas* Chairman  
*Dennis G. Bergman* Secretary-Treasurer  
MNCPCRC RECORD FILE N° 509-33

MONTGOMERY COUNTY, MARYLAND  
DEPARTMENT OF PUBLIC WORKS  
APPROVED DECEMBER 2, 1970  
*Richard J. Lusk*  
SEAL DIRECTOR OF PUBLIC WORKS

26 Lots

221-A1